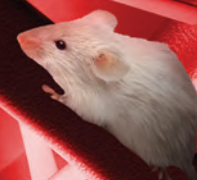


PLAS ■ LABS™

Small Animal Catalog



CONCEPTION ■ INTERPRETATION ■ PRODUCTION ■ SATISFACTION

Established 1967

Surgery Equipment



509-RS24, two sizes available: 24" and 30"

Surgery Board Features

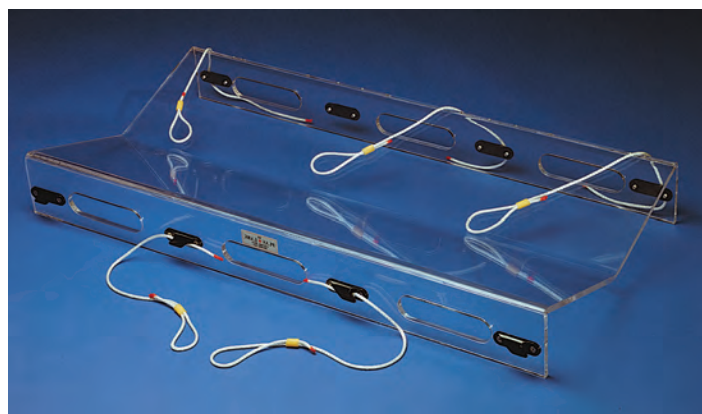
- Formed, one-piece construction for long service life and durability.
- Center depressed slope for fast positioning of animal.
- Unique, fast acting tie down cam cleats.
- White, high temperature plastic and nylon components.
- Lightweight and easily portable.
- Uprights adjustable to elevate board for special positioning .
- Five (5) quick-tie, nylon restraint cords .
- Suction cup feet provide a steady work surface(N/A on 509 Series).



510-SS

508-MS

Model Number	Product Size	Approximate Animal Size
505-XRAY	36 x 17.5" 914 x 445mm	100 lbs. (45 kgs.)
508-MS	4.5 x 11" 114 x 280mm	up to 9" long
510-SS	8.125 x 16" 206 x 406mm	up to 12" long
509-RS24	12 x 24" 304 x 609 mm	up to 4 kilos
509-RS30	12 x 30" 304 x 762 mm	4 to 7 kilos



505-XRAY, X-Ray Positioner

The positioner is fabricated of .375" thick autoclavable clear polycarbonate. It includes five Nylon restraint cords and fast acting locking cam cleats. Four machined openings on the sides provide excellent non-slip gripping of the device.

The positioner has three (3) uses:

1. An "X-RAY" positioner
2. An actual surgical board
3. A "Gurney" for transporting animals from the surgical suite to the recovery area.

Anesthesia Chamber

Plas **■** Labs Anesthesia Chambers are available in four (4) standard sizes. Custom sizes are available.

All chambers include heavy duty construction of either smoked transparent acrylic or thermoset plastic (Clear, Smoke, or Black). Refer also to 900-RCS on page 21.

Features Include:

- Stainless Steel Hardware.
- Removable False Floor.
- Two (2) Gas Nipples or Gas Valves on our larger units.
- Closed Cellular Gasketing.



903-EC with optional oxygen analyzer 800-OA

Model Number	Suggested Animal	Interior Size w x d x h	Color	Volume
901-EC	Small Rodents	12 x 12 x 12"	Transp. Grey	28 liters
902-EC	Large Rodents	18 x 18 x 18"	Transp. Grey	95 liters
903-EC	Rabbits Felines, Small Canines	36 x 20 x 24"	Transp. Grey	224 liters
904-EC*	Felines Canines	28 x 24 x 28"	White Thermoset Plastic	264 liters

* 904-EC is similar to FIC-24-1 on page 6

*Did You Know?
One (1) cubic foot is equal to
28.3 Liters in volume?*



903-EC with Gas Absorption System

903-EC shown with optional gas absorption system (800-DT/SS)

Applications

- Hibernation Studies.
- Euthanasia.
- Nebulizing Chamber.
- Air Pollution Studies.
- Special Gas Atmospheres.

Optional Accessories

- Oxygen Analyzer.
- Stainless Steel Floor.
- CO2 Absorption System with pump.
- Ground Key Cock Valves (N2, Air, Vac, Etc.).

Rodent Containment System

Simple to Use and Inexpensive for the Budget Minded Investigator.



900-RCS

This is the only available unit which can be used as a free flow or sealed system.

Our chamber may be used as an open or closed system. If an open system (free flow of air) is desired, align the holes on the top cone with the main clear cylinder. If not, realign the holes to affect the closed system. Once realigned, simply tape the top and the bottom to the main cylinder.

Accommodates mice, rats, gerbils, hamsters, and guinea pig sized animals. This inexpensive containment system is extremely useful for acute or chronic studies.

Applications

- Metabolism Studies
- CO₂ Collection
- Inhalation Work
- Euthanasia Chamber
- Isolation Requirements
- Anesthesia Techniques

System Includes:

- Two molded convex cones.
- One molded concave top for alternative watering technique.
- Clear cylindrical main housing.
- Two gas nipples (1/8 x 1/4 NPT hose barb style)
- One roll of vinyl sealant tape.
- Metal tripod stand.
- Stainless steel floor grid.
- Fecal / urinary separator.

*Did You Know?
For most liquids, one (1) ounce is equal to thirty (30) ml. in volume?*

Model Number	Suggested Animal	Interior Size	Color	Volume
900-RCS Standard	Small Rodent(s)	7.75" diam. ID 8" height	Clear Cylinder	7.5 liters
900-RCL Large	Large Rodent(s)	10.75 diam. ID 9" height	Clear Cylinder	13.5 liters



900-10, "J" Feeder

*In use for over
45 years!*

Rodent Equipment

Broome Style Restrainers

This is perhaps the most effective style available for three basic reasons;

1. Ease of use and access to the rodent.
2. Prevention of the animal's ability to turn.
3. Safety for the animal handler.

Flat Bottom Restrainers

These convenient restrainers have been a research standard for over forty years. The adjustable tail stock can be inserted into any one of four positions. Apertures in the top and bottom provide easy access for injections or sampling. The pocket and holes in the front make it easy to anesthetize or feed the animal. Refer to page 23.

Rodent Injection Cone

This device is relatively new on the research scene. It is extremely useful for large quantity sampling where high speed and efficiency are required. It is completely transparent, durable, and easy to clean, suction cup feet offer a secure work device. Refer to page 23.

See Also:

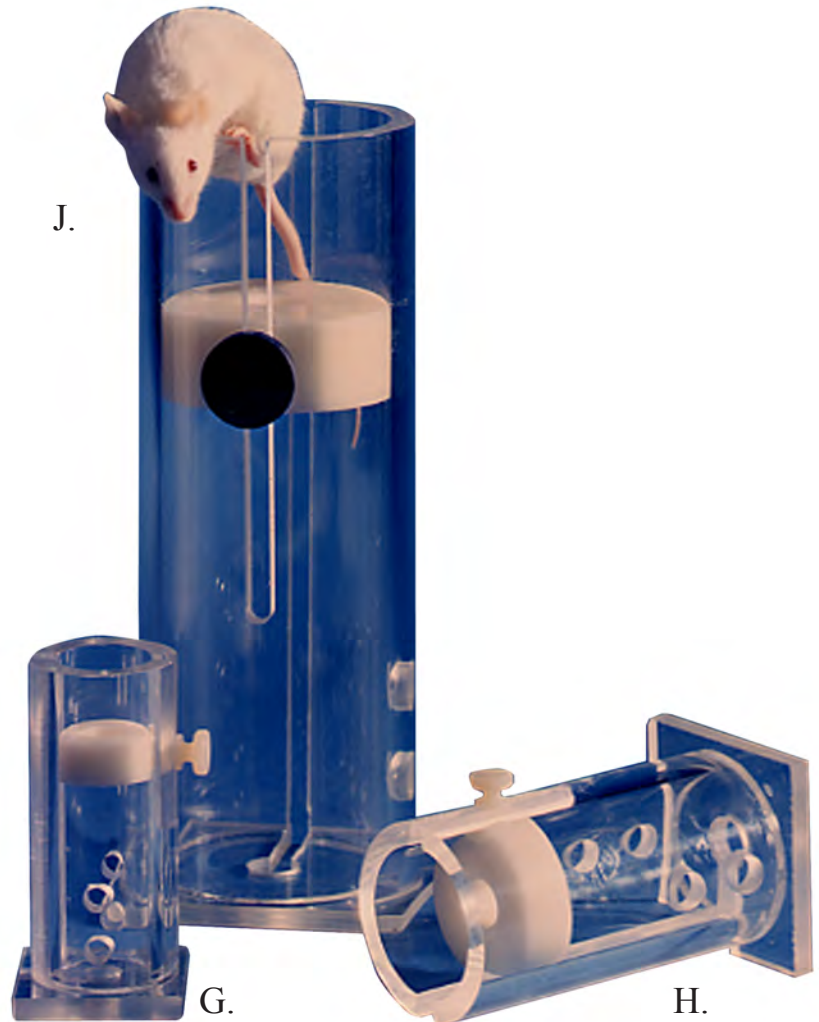
562-IRC, Illuminated Tail Injection Cone on page 25

Surgery Boards

Plas Labs surgery boards are formed of one piece high-temp Noryl™ for durability and ease of cleaning. Five adjustable Nylon cords are included. (Refer also to Page 19)

*“Slip Into Something
Comfortable!”*

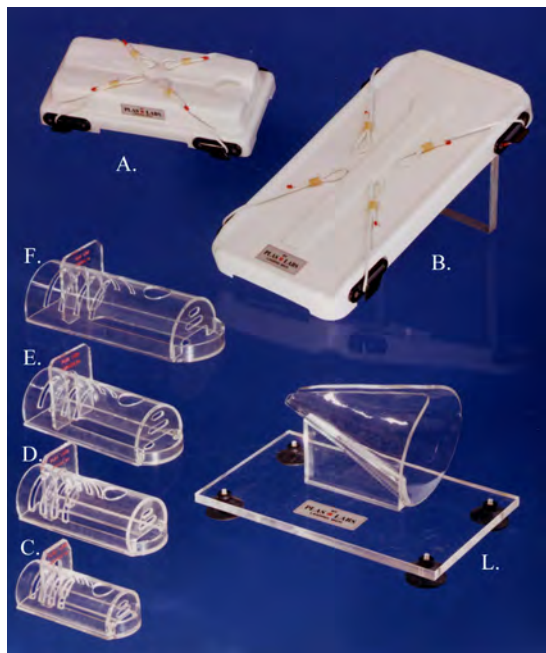
J.



550-Series Broome Style Restrainers

Also, refer to our new illuminated rodent cone, part number 562-IRC, on page 25





Rodent Equipment

Photo Key	Model Number	Item	Product Size	Animal Range
A.	508-MS	Surgery Board	4.5 x 11"	up to 9" long
B.	510-SS	Surgery Board	8.125 x 16"	up to 12" long
C. D. E. F.	541-RR 542-RR 543-RR 544-RR	Flat Bottom Rodent Restrainer	1.5" diam. x 3.75" 2" diam. x 5" 2.5" diam. x 6" 3.25" diam. x 8"	15 to 30 g 30 to 125 g 125 to 250 g 250 to 500 g
G. H. I. J. K.	551-BSRR 552-BSRR 553-BSRR 554-BSRR 555-BSRR	Broome Style Rodent Restrainer	1" diam. x 3.75" 1.5" diam. x 5.5" 2" diam. x 8" 2.5" diam. x 8.5" 3.5" diam. x 9"	15 to 30 g 30 to 125 g 125 to 250 g 250 to 500 g 500 to 800 g
L.	561-RC	Injection Cone	5.75" long x 5" high x 4" opening	Mice: 15 to 30 g Rats: 500 to 600 g

All rodent restrainers are manufactured from clear materials to provide complete visual awareness of the state of your animal. We offer two styles of restrainers in four convenient sizes.

A special Broome Style unit for obesity studies, The Zucker Unit, is also offered. Catalog # 555-BSRR (Not illustrated).

Insertion Sequence

To place the animal in the Broome Style Restrainer, loosen and remove the nose piece and grasp the animal by the tail. Slide the animal's tail along the longer open groove until the animal is completely in the cylinder. Slide the nose piece into the short groove on the opposite side of the restrainer and place it up to the nose of the animal to ensure a snug fit.

This restrainer is perfect for injections or blood sampling.

Also, refer to our new illuminated rodent cone, part number 562-IRC, on page 25



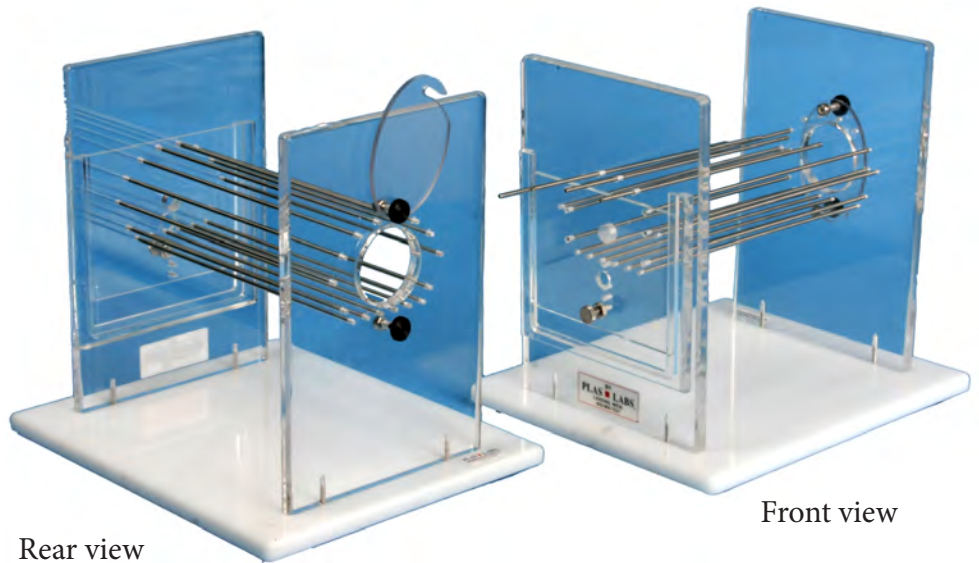
550-Series Insertion Sequence

Bowman Style Rodent Restrainer

The PLAS ■ LABS 530-POR, Bowman Style Rodent Restrainer has been re-engineered and refined to accommodate larger sized animals up to 750 grams. The positions of the stainless steel rods around the rodent provide easy access for many types of research applications, especially obesity studies.

The rodent can quickly be inserted into the restrainer by removing several stainless steel upper rods, or through an access port hole in the rear upright. The access port hole features a polycarbonate locking door to prevent escape.

The front “guillotine” door can be adjusted and locked by using any one (1) of three (3) adjustment positions. The door has a stainless steel “spring loaded” lock. Suction cup feet on the white plastic base secure the device during use.



530-POR

Product Specifications

- Weight Range: 250 up to 750 grams.
- Maximum length of the rodent compartment is 9” (228 mm).
- Eighteen (18) stainless steel rods are adjustable up to 3.5” ø (89 mm)
- Rear access port opening is 2” ø (50.8 mm). The polycarbonate locking door is attached by a “nylock” fastener to prevent future operational loss.
- Overall height is 11” (279 mm).
- Base size is 10” x 12” (254 mm x 305 mm).
- Basic unit is constructed of .500” (12.7 mm) jeweled acrylic.
- Suction cup feet included for stability.



Close-up of rear locking door to prevent escape.



Door in the upper position locks the stainless rods in place.

Illuminated Tail Vein Unit



PLAS ■ LABS now offers an “Illuminated Rodent Tail Vein Injection Cone”. The new 562-IRC features our “Bright Light” illumination system with rechargeable batteries and recharge unit, clear plastic tail insertion cone, formed white base with suction cup “non-slip” feet, housing batteries, on/off switch, lights, and an electrical plug for recharging the batteries (100-240 VAC capacity.)

What’s Included with the 562-IRC:

- Clear plastic tail insertion cone.
- Formed white plastic base containing batteries, “on / off” switch, and lights.
- Base used for recharging batteries. Two (2) included with system.
- Electrical plug for recharging batteries. (100 to 240 Volt capacity.)

562-IRC

Catalog Number:	562-IRC
Cone Dimensions:	5.75” long x 5” high x 4” opening
Total Footprint Size:	8.5” x 10” (216mm x 254mm)
Light bulb warranty:	30,000 hours
Animal Weight Range:	Mice: 15 to 30 grams Rats: 500 to 600 grams



562-IRC “On”



562-IRC “Off”

Rabbit Equipment

“The only thing that wiggles is the nose!”

Plas Labs Rabbit Restrainers are clearly the best. They provide total observation of your valuable research animal.

All Rabbit equipment was originally developed in the early 1970's in research labs under actual research conditions.

We were the first to use clear acrylic materials to protect and safeguard your animals. Eliminates or minimizes back injuries.

**Refer to animal weight ranges
on page 27**



503-XL, 502-AR, and 501-TC (top to bottom)

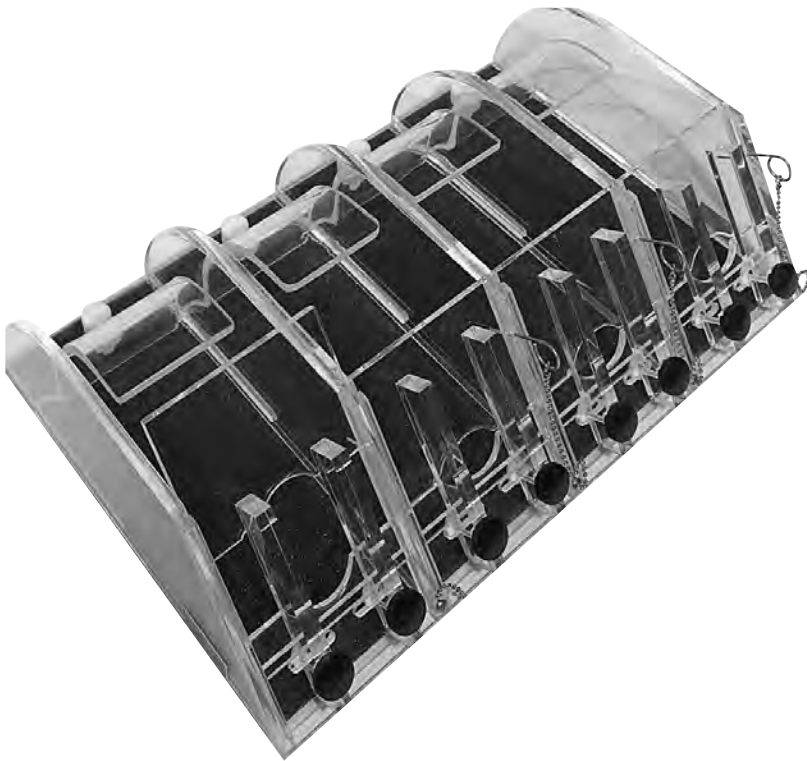


502-AR in an Ophthalmological Study

Basic Rabbit Restrainer Features

- Highly polished edges prevent chafing, especially at the neck.
- Non-slip surface provides better footing and helps to calm animal. This is much safer and easier on the animal's foot pads.
- Clear acrylic aids in retaining body warmth. Hypothermia is eliminated.
- Unique curved back butt plate minimizes the risk of back injury. The plate is anatomically correct.
- Vertical head bars are adjustable and easily removable if not needed.
- Rear access hole for pyrogen testing (N/A on 501-TC).
- Stainless steel pin offers several fine adjustment points for neck plate.
- Unit can be sanitized in a cage washer up to 180 degrees F° (82°C) or sterilized chemically.
- Non-slip base pads ensure unit stability.

Rabbit Equipment



Catalog Number	Description
504-PT	Multiple Stall Rabbit Restrainers (No head bars or butt plates)
504-PT-2	(Two Stalls)
504-PT-4	(Four Stalls)
504-PT-6	(Six Stalls)
504-PT-8	(Eight Stalls)
506-MS	Multiple Stall Rabbit Restrainers (with head bars and butt plates)
506-MS-2	(Two Stalls)
506-MS-4	(Four Stalls)
506-MS-6	(Six Stalls)
506-MS-8	(Eight Stalls)

504-PT-4

Model Number	Item	Product Size w x d x h	Animal Weight Range
501-TC	Rabbit Restrainer	6 x 24 x 5" 15 x 61 x 13 cm	4 to 7 kilos
502-AR	Rabbit Restrainer	6 x 18 x 6" 15 x 45 x 15 cm	up to 4 kilos
503-XL	Rabbit Restrainer	6 x 22 x 6.5" 15 x 56 x 17 cm	4 to 7 kilos
505-XRAY	X-Ray Positioner refer to page 19	18 x 36 x 4" 46 x 91 x 10 cm	up to 7 kilos
506-MS	Multi-Stall Rabbit Restrainer	size depends upon number of stalls required	up to 4 kilos per stall



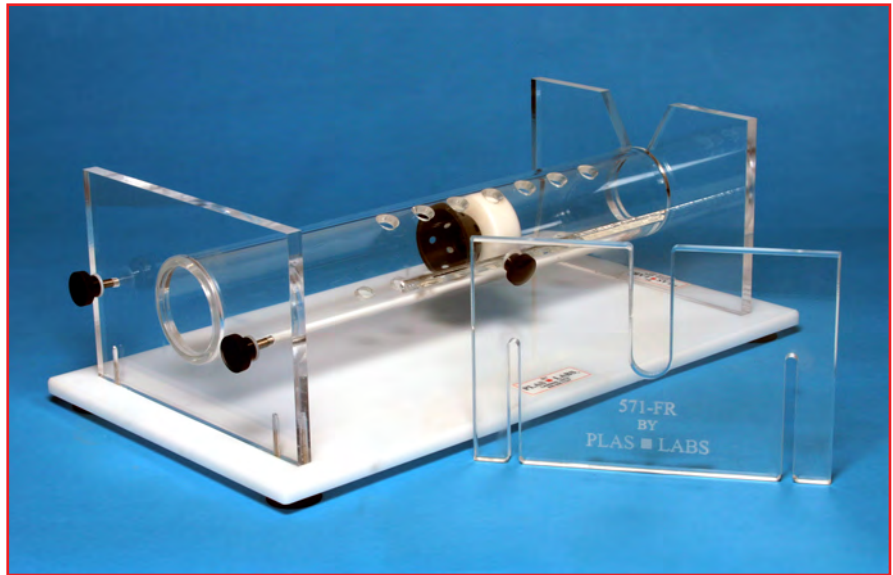
CART-RR, Support Cart for Rabbit Restrainers

CART-RR, Stainless Steel support cart accommodates up to four rabbit restrainers. Includes non-scurf casters with brakes and locks. Cart size: 34" wide x 36" deep x 36" high
865mm x 915mm x 915mm

Ferret Restrainers

The Plas Labs' Ferret Restrainer is a modified version of a similar device initially described by Dr. Daniel McLain in the Volume #35, No. 7 issue of *Lab Animal Magazine*.®

The Plas Labs' units are offered in four (4) sizes taking into consideration the animals age, weight, and sex. The units are constructed of optical quality clear acrylic (Perspex), and a formed black plastic nose cone with an Acetal locking slide. The main restraining cylinder can be rotated 360° to provide complete access to the animal. All units are mounted on a white acrylic base plate with suction cup feet to guarantee reliable stability during testing procedures. Counter top space required is 11.5" x 21". (292 x 534mm)



571-FR

Catalog Number	Dimensions	Animal Weight Range
571-FR	64 mm ID x 18" long	400 to 700 grams
572-FR	79 mm ID x 18" long	650 to 1,000 grams
573-FR	88 mm ID x 18" long	1,000 to 1,700 grams
574-FR	101 mm ID x 18" long	1,500 to 2,000 grams

SCIENTIFIC NAME

Mustela putorius furo

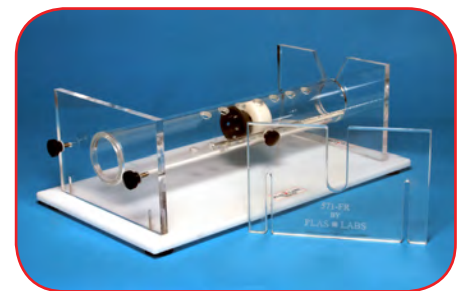
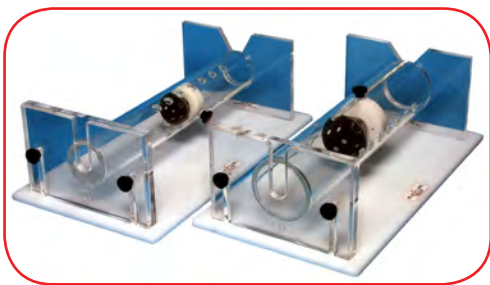
Taxonomy:

PHYLUM: Chordata

CLASS: Mammalia

ORDER: Carnivora

FAMILY: Mustelidae



Ferret Restrainer Features:

- Suction cup feet on all four (4) corners.
- Rear tailgate securing knobs. Two (2) typical on each unit.
- Nose cones can slide out to remove ferret.

- Cylinder rotates to use access holes.
- Nose cones with securing knobs. (Breathing holes)

